



Welcome to the 1st Regional Resilience Summit!

An opportunity to get together & build a space to get better together!

On the street, my grandfather and his mates would call "BUNDJALING!" to greet each other. He said it means: "ONE PEOPLE" Even though we're different tribes.



UNCLE MICK - BUNDJALUNG



CLEANSE THE SPACE WELCOME YOU AND A DANCE TO



DISASTER READY TOGETHER SUMMIT 2024



NORTHERN RIVERS NSW

KEYNOTE #1 DISASTER RECOVERY: WHERE ARE WE AND WHAT COMES NEXT? DR. KATE BRADY



KEYNOTE 2 CULTURAL CAPITALS ENHANCING DISASTER RESILIENCE



BREAKOUT Zoë Robinson AND A PANEL OF YOUNG PEOPLE VOICES OF CHILDREN AND YOUNG PEOPLE IN RECOVERY + HOPE FOR THE FUTURE!

These are the stories of young people and their ideas.



Young People being heard!

Community Standing up

Young children know they're not at home + need help understanding WHY things have changed.

CHALLENGES of Y.P

Even before the event - cost of living... and then a flood took everything (home + job) and now stuck in villages with no hope

80% of my boys were struggling.

Come together + help them UNDERSTAND

"STOP DROP ROLL" but what about floods?

BETTER PREPAREDNESS Lismore is a flood zone, yet no-one knew what to do.

BREAKOUT Lisa McPhie + Linda Fitzpatrick STAFF WELLBEING IN THE CONTEXT OF DISASTERS



OVERVIEW OF EMERGENCY MANAGEMENT IN THE NORTHERN RIVERS



EVACUATION CENTRE OVERVIEW

BREAKOUT
AMANDA CAUSLEY & FEARGUS O'CONNOR

ROLES

1. Identification of sites - Local E.M. Committee
2. Decision to Evacuate - SES / RFS / Police
3. Activation of site
4. Open + manage - DCJ



Multi-agency approach

Northern Rivers are currently reviewing its arrangement + processes.

ACADEMIA



LOOKING AHEAD LISMORE: THINKING ABOUT THE FUTURE!

BREAKOUT
Dan Etheridge AND S.C.U Living Lab Northern Rivers

We can't expect them to KNOW HOW with out the advice/tech Gov. has available.

EXPERT LOCAL + EXPERT TECHNICAL



CREATE A SPACE TO BRING TOGETHER TO DELIVER CHANGE

20yrs Ago... Go To New Orleans!

started my journey...

Won't create solutions that work in a local context remotely.

LOOKING AHEAD CO-DESIGN PROJECT

Lived experience, co-design IDEATION WORKSHOP



What is Lismore's future vision?

DEBATED ABOUT A second safe CBD

CBD HOUSING

MOVING OR KEEPING THE CBD.

There was disagreement, but we navigated it well so that it was still a productive workshop!"

We've turned our back to the river + there is opportunity to face it and connect with the river!

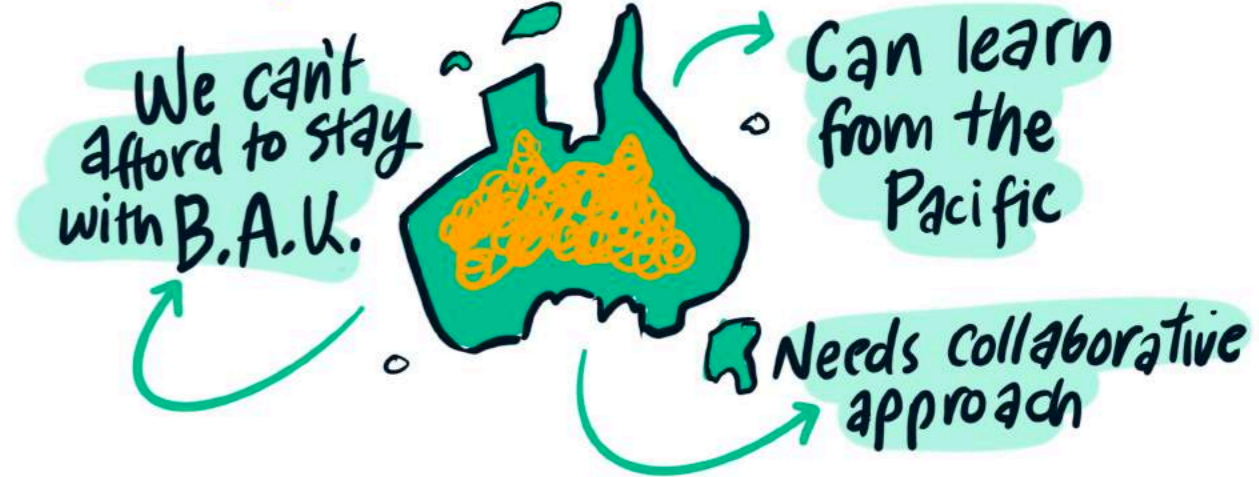
The state will prioritise the most isolated communities first.

INTERNATIONAL PERSPECTIVES ON RESILIENCE + RECOVERY

BREAKOUT
Joanna Quilty + Bec McNaught

1. Disasters are a BILLION \$\$\$ industry and exacerbate inequality!
2. 1st Line of defence is LOCAL + SOCIAL CAPITAL
3. Social service NGOs are the LOGICAL PARTNERS - resourcing and coordination are essential.

Pre-existing conditions determine resilience!



2022 Flood Learnings

Not enough Gov. Staff to respond.

Staff role confusion + overwhelmed

CONCRETE GUIDANCE

Health Lessons

Utilise existing local resources - like the Emergency + Drug + alcohol Departments from the hospital.

A dedicated Medical Site Manager to assess + respond.



- Notification of a event near you
- Advice to stay or go
- Locate Evac. Centres

Volunteers

Emergency Management training and compliance for roles.

State Prefer working with Credited Volunteers

We want to have a handshake months in advance. so we can WORK WITH YOU TO BRING STATE + LOCAL TOGETHER!

Preparing + Best Practice Partnerships

Upcoming STATE ↔ LOCAL training



GOLD SPONSORS



NSW RECONSTRUCTION AUTHORITY



DIOCESE OF LISMORE



Southern Cross University

EARLY CHILDHOOD

BREAKOUT
Sharleen Keleher + Local Early Childhood Centres Panel

People of all ages are learning to be resilient! We see it with children who are learning to cope with big loss...



Childhood care workers translate knowledge FROM ADULTS TO CHILDREN!

Games Stories Examples
TELL STORIES + LEARN TO COPE WITH LOSS.
Children just want to understand and be included!

LEARNING FROM TRIALS OF COMMUNITY-LED RESILIENCE INNOVATIONS

BREAKOUT
Pr. Briony Rodgers, Helen Duroux + Pamela Denise



"Community-led doesn't mean Community alone."

COMMUNITY-LED DISASTER RESPONSE

BREAKOUT
Natalie Meyer + Virginia Waters



Provides community with clarity on what to expect and who is doing what.
Community can PREPARE + RESPOND
PREPAREDNESS INCLUDES RESPONSE

"Our Goal is to augment what combat agencies can provide!"

COMMUNITY-LED RESILIENCE

BREAKOUT
Jean Renouf Dr. Jo Longman + Emma Pittaway

DEFINITION
"Community-led Response"

Community members are in for the long haul!

"People still struggling but can struggle together. Everyone is just doing their best."

Spontaneous!
Individuals stepping up!

Established & Informal orgs

Extending & community specific
eg: Koori Mail

"It's okay to take a break. It will be there when you get back..."

BREAKOUT
Renee Havin CEO Resilient Ready

BUILDING ORGANISATIONAL RESILIENCE

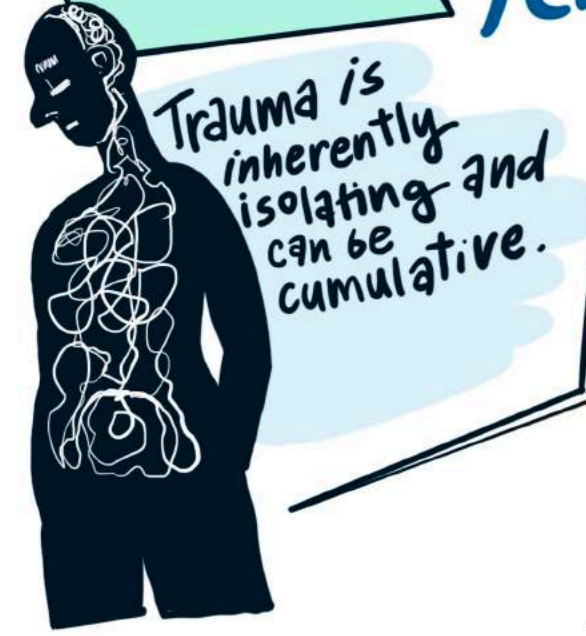
- #1 In this new era of new, compounding disasters - Communities need resilient + ready community organisations.
- #2 Those who run community orgs need to think + do differently

"Preparedness is not a static state but a dynamic process of growth and improvement."



FLOOD MENTAL HEALTH - TWO YEARS ON...

BREAKOUT
Emma Schubert + A Panel of local mental health workers.



D.R.T LOCAL PARTNERS:
Nimbin Neighbourhood Info Centre
Mid Richmond Neighbourhood Centre
Kyogle Together
Rekindling the Spirit

BREAKOUT
Matt Rahmate + Samantha Albertini

LEADING STAFF IN EMERGENCIES

- What social Futures and Kyogle Together learnt after the 2022 Floods:
- Wellbeing + community support of staff #1 PRIORITY.
 - communications are key
 - hard copy contact lists and locations
 - Suspend and assess BAU.



GOLD SPONSORS



NSW RECONSTRUCTION AUTHORITY



DIocese OF LISMORE



Southern Cross University



SENIOR DEPUTY VICE CHANCELLOR
PROFESSOR MARY SPONGEBERG

Thank you to Bundjalung Communities & Koori Mail's recovery response and sharing knowledge on for a way forward.



BREAKOUT BHIAMIE WILLIAMSON + PANEL OF LOCAL INDIGENOUS RECOVERY WORKERS

WORKING WITH ABORIGINAL COMMUNITIES DURING + POST DISASTERS

Community has obligation to Country but also want to help in any way to our wider local community

Often services needed aren't funded and we need to come to a safe space for help.

There are many resources for Whitefellas to learn from!

Are we a safe, culturally sensitive space? Local staff? Ask ourselves many questions WITHOUT BURDENING INDIGENOUS PEOPLE TO EDUCATE US.

BREAKOUT Oli Costello + Rob + Boota

Get in touch with nature in order to work through natural disasters efficiently!



RESILIENT LISMORE

Country can teach us - we just need to listen. We can work together with farmers to preserve wildlife. Educating through Country!

KEYNOTE #3

PERSON CENTRED EMERGENCY PREPAREDNESS

ASSOCIATE PROFESSOR MICHELLE VILLENEUVE

People with disability have a lot to offer on how to be inclusive + accessible so EVERYONE benefits and are SAFE!



Engage with us from the start or not at all! Nothing for us, without us!

I can go and meet with Gov and come back ...

OK! Lets get to work!

Invested 14 Months to build a relationship with the group members.
Started small

EVERYONE NEEDS A PLAN!

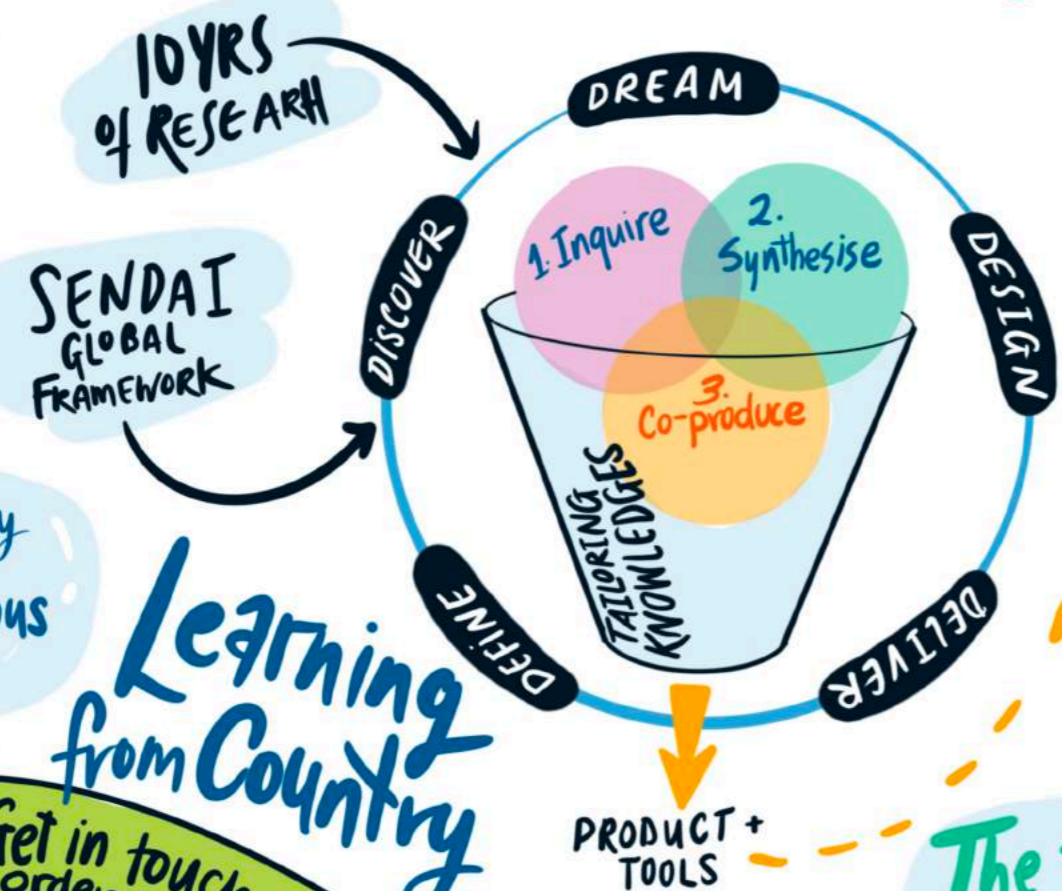


- Every individual
- Every household
- Every org + business
- Every community

It is a human right for people with disability to have protection & inclusion ACROSS PREPAREDNESS DURING + POST disaster.

DIDRR

- P-CEP
- DIEP
- P-CEP CERTIFICATE
- P-CEP CONNECT
- ESDA



Learning from Country

OUR FELT Flood IMPACTS
Lost My Business + jobs
Missed Birthday
Dance studio flooded.

Sprung!!



DANCE THEATRE

We are the reporters + Anchors



TOP NEWS TODAY!
SPRUNG! NEWS!

We really didn't know what was going on and a way to help.

Why not make our own news?

AN EXHIBITION OF OUR EXPERIENCES!

NEW IS INACCESSIBLE

- BORING
- LOAD OF BULL
- LOTS OF WORDS
- LOTS OF TEXT
- NOT SUITABLE FOR EVERYONE.



~~Siberish~~

- NO AUSLAN
- NO SUBS
- TOO WORDY
- FAST!
- WE DON'T WATCH it
- 1HR late



In our exhibition we use jibberish Ya-ka-la-pa-ka-ki-tal! so you can experience inaccessible news.

If we can't hear/understand you it becomes a matter of life + death for us!



NSW RECONSTRUCTION AUTHORITY



DIocese OF LISMORE



BREAKOUT
LUKE BARBAGALLO
TRACY CROMPTON
LEA HINE

USING AND ADAPTING THE P-CEP APPROACH

P-CEP is an approach to support those most marginalised by the system.

Can begin to embed impact into the community, even once the funding is gone.

It's important to do the plan + talk about it with friends.



Use existing LAG. Diversity + Inclusion Plans as a way to connect P-CEP to councils.

Build awareness across these three stakeholders

About having good conversations on PREPAREDNESS



P-CEP's core is the 'Capability wheel'. Put it beside other plans for a reminder + visual thinkers.

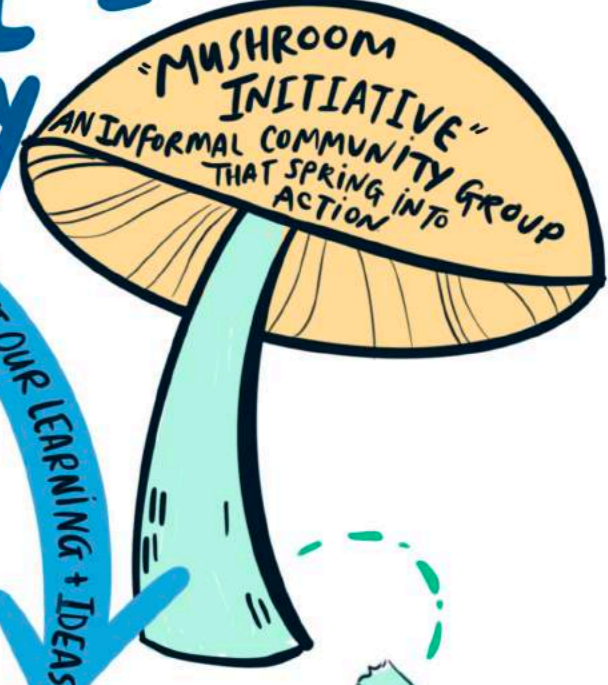


NG.O SECTOR'S ROLE IN DISASTER: ADVOCACY AND APPROACH

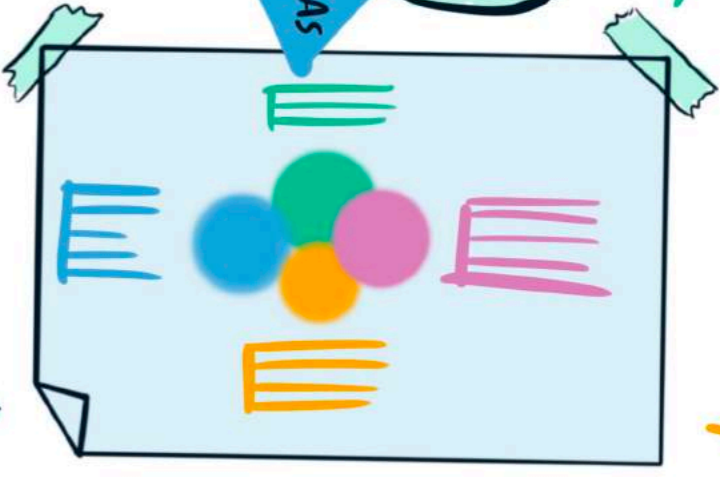
BREAKOUT
Cara Varian + Megan Nicholson



Learn about what works on the ground to show NGO value, connections and capability of the whole sector.



TODAY WE WANT TO TEST OUR LEARNING + IDEAS



BOOST IN LONG TERM FUNDING +



CLOSING PANEL WORKING TOGETHER!

THIS SPACE HAS CHANGED: UNIFORMS < COMMUNITY SERVICES

2 YRS ago, if you'd told me I'd be at an event like this, I would have laughed in your face...



Governments were not ready and let you down.

Coming here to see everyone, learn + still see the effects was really grounding.



It felt like shifting deck chairs on the Titanic!

This is Aboriginal Peoples lives. We expect the disfunction + find fit for our community!

RECOVERY IS LONGER THAN TWO YRS!

We're actually getting busier as people have space now to process... Just as our funding is running out!

VOLUNTEERS FOR SES BUT NOT AS A RESERVE. BASIC TRAINING SO WE CAN TAPE + TARP CORRECTLY WHILE WE WAIT!

REFLECTIONS KEY ASKS STRATEGIC ADVOCACY ISSUES

ASKING FOR MORE CONVERSATIONS WITH FORMAL, COMMUNITY NGOs + INFORMAL SUPPORTS. BOOST THE NEXUS!

SUPPORT MUSHROOM GROUPS BY PROVIDING THE UNDERLYING STRUCTURES

- corporation
- insurances
- training

DATA + RESEARCH + ADVOCACY TO EXPAND PROGRAMS.

Gov. don't know how to measure this!

KEY ACTION AREAS:
→ Network
→ Communications
→ Community.

Look inwards first so you are strong to support others.

Social Capital

- ELLY BIRD
RESILIENT LISMORE
- BHAMIE WILLIAMSON
FIRE TO FLOURISH
- JOANNA QUILTY
NSW RECONSTRUCTION AUTHORITY
- SGT MARK JOHNSTON
DEPUTY LECCON LEMC
- BEC McNAUGHT
RESEARCH FELLOW - UCRH



RESILIENT LISMORE

⚡ RSS SERVICES HEADED FOR THE 2YR CLIFF
We know people need certainty and we're working on it!

GOLD SPONSORS



NSW RECONSTRUCTION AUTHORITY



DIOCESE OF LISMORE



Southern Cross University